

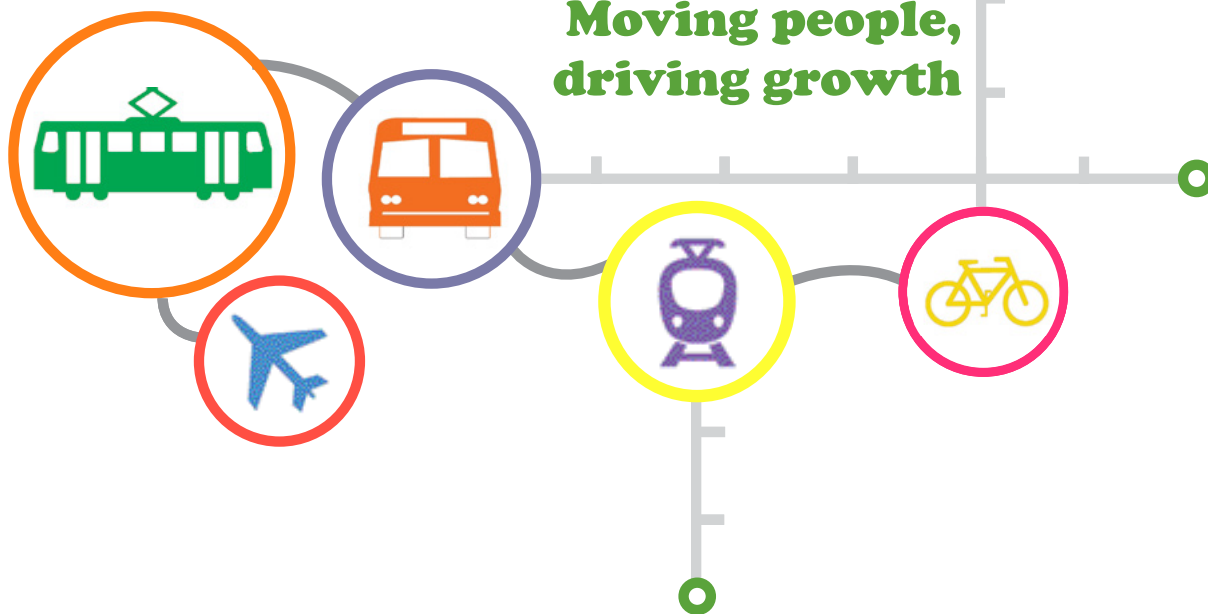


Nottingham Conference Centre
20-21 June 2016



INTERMODAL

Moving people,
 driving growth



**DELEGATE
 INFORMATION**

mainspring



08.00: EVENT REGISTRATION, NETWORKING AND EXHIBITION

08.45 WELCOME AND PLENARY

Peter Richardson – Chair, Tramlink Nottingham
Councillor Nick McDonald – Portfolio Holder for Jobs, Growth and Transport, Nottingham City Council

09.30 The 25- and 50-year plans: Linking land use and the role of efficient mobility

Councillor Nick McDonald – Portfolio Holder for Jobs, Growth and Transport, Nottingham City Council

09.55 How devolution will change the transport dynamic PANEL DEBATE

Lilian Greenwood MP – Shadow Secretary of State for Member of Parliament for Nottingham South
Councillor Nick McDonald – Portfolio Holder for Jobs, Growth and Transport, Nottingham City Council
Councillor Roger Lawrence – Leader, Wolverhampton City Council
Jas Hundal – Service Director, Environment, Transport and Property – Nottinghamshire County Council

10.40 Movement for Growth and Midlands Connect

Councillor Roger Lawrence – Leader, Wolverhampton City Council

11.05 Questions and answers with session 1 speakers

11.30: MID-MORNING REFRESHMENTS, NETWORKING AND EXHIBITION

12.00 Building the case for public transport investment

Dr Jon Lamonte – Chair, Urban Transport Group

12.25 How dependent is your city on private travel?

Stephen Joseph OBE – Chief Executive Officer, Campaign for Better Transport

12.50 Questions and answers with session 2 speakers

13.00: LUNCH, NETWORKING AND EXHIBITION

14.00 One size doesn't fit all: A tour of alternative transport solutions

Geoff Inskip – Chair, UKTram

14.25 Rethinking urban bus strategies

Neill Birch – Director, Public Transport Operations, SYSTRA

14.50 Making the most of transport infrastructure - The role of personal behaviour change programmes

Emma Taylor – Principal Consultant
Ross Paradise – Senior Transport Planner, AECOM

15.20 Building a culture of customer service excellence: Virgin Trains East Coast

Claire Ansley – General Manager, Virgin Trains East Coast

Building a culture of customer service excellence: Nottingham Trams

Joanne Bentley – Customer Services Manager, Nottingham Trams

16.05 Transport for all: The role of community transport

Bill Freeman – Chief Executive, Community Transport Association

16.30 Questions and answers with session 3 speakers

SPONSORED BY
SYSTRA

17.00: CLOSE OF DAY ONE

08.00: EVENT REGISTRATION, NETWORKING AND EXHIBITION

08.45 EVENT WELCOME AND PLENARY

Peter Richardson – Chair, Tramlink Nottingham
Councillor Nick McDonald – Portfolio Holder for Jobs, Growth and Transport, Nottingham City Council

09.30 Welcome from Hall B Chair

Colin Walton – Chairman, Rail Forum East Midlands

09.35 Inductive wireless charging for public transport

Christian Köebel – Director Product Management, PRIMOVE, Bombardier Transportation

10.00 Innovations in fuel cell technology

Nicolas Pocard – Director of Marketing and Channel Management, Ballard Power Systems

10.25 Smart asset management and predictive maintenance

Peter Smith – Product Management Director, SoftSols Group

10.50 Technology as a key enabler in the future of passenger-centric travel

Russell Goodenough – Client Managing Director and Head of Transport, Fujitsu UK & Ireland

11.15 Questions and answers with session 1 speakers

11.30: MID-MORNING REFRESHMENTS, NETWORKING AND EXHIBITION

12.15 Where next for the UK bus market? PANEL DEBATE

Paul Lynch – Managing Director – Yorkshire, Stagecoach
Mark Fowles – Managing Director, Nottingham City Transport
Martin Hancock – Development Director, National Express
Phil Owen – Commercial Sales Director, Bus, Volvo Group UK
Neill Birch – Director, Public Transport Operations, SYSTRA

SPONSORED BY
SYSTRA

13.00: LUNCH, NETWORKING AND EXHIBITION

14.00 Creating safe passenger environments

Superintendent Allan Gregory – Midlands Sub-Division Commander, British Transport Police

14.25 Mitigating safety risk through confidential reporting

Chris Langer – Human Factors Advisor, CIRAS

14.50 Digital solutions for the door-to-door journey

Arnaud Julien – Innovation and Digital Director, Keolis

15.15 The Seamless Journey: Physical vs. Digital

Fred Gangemi – Associate, Steer Davies Gleave

15.40 Big Data: Security and Privacy considerations

Dennis Lee – Senior Associate, Bircham Dyson Bell

16.05 Creating future-proof data and voice networks

Peter Kingsland – Senior Sales Director, Icomera

16.30 Q&A of session 3 speakers

17.00: CLOSE OF DAY ONE

08.15: EVENT REGISTRATION, NETWORKING AND EXHIBITION

09.00 WELCOME

Peter Richardson – Chair, Tramlink Nottingham

09.10 Strategic highway planning and the Intermodal mix

Martin Tugwell – Programme Director, England's Economic Heartland Strategic Alliance

09.35 Cycling and public transport make a dream team

Sander van der Eijk – Senior Consultant, Urban Mobility, Goudappel Coffeng

10.00 How effective urban transport can change the employment landscape

Roger Harrison – Governor, New College Nottingham

10.25 Driving growth: The regional transportation supply chain

Michelle Craven-Faulkner – Vice Chair, Rail Forum East Midlands

10.50 Transport investment as a driver for growth

Rhys Wyborn – Senior Associate, Geldards

11.15 Questions and answers with session 1 speakers

11.30: MID-MORNING REFRESHMENTS, NETWORKING AND EXHIBITION

12.00 Urban Transport: The EIB Financing Perspective

Dimitri Popov – Senior Lending Officer Infrastructure Finance, Western Europe, European Investment Bank

12.25 Alternative funding options: From Congestion Charging to Workplace Parking Levies

Rahul Bijlani – Senior Associate, Government and Infrastructure, Bircham Dyson Bell

12.50 Questions and answers with session 2 speakers

13.00: LUNCH, NETWORKING AND EXHIBITION

14.00 What passengers REALLY want

David Sidebottom – Passenger Team Director, Transport Focus

14.20 Integrating taxis with public transport, including Mobility as a Service

John Austin – Managing Consultant, Austin Analytics

14.45 Uber: Complement, not competition

Mathieu Proust – General Manager, Uber

15.10 Partnering for growth: Public transport and air/rail strategies

Angie Doll – Passenger Service Director, Gatwick Express

15.35 Effective harmonisation of passenger transport services

Neill Birch – Director, Public Transport Operations, SYSTRA

15.55 Isle of Wight: What next for the Island Line?

Christopher Garnett OBE – Independent Consultant

16.20 The economic case for urban transport

Nathan Marsh – Partner, EY

16.45 Questions and answers with session 3 speakers

17.00: CLOSING REMARKS FROM CHAIR

17.15: CLOSE OF INTERMODAL

08.15: EVENT REGISTRATION, NETWORKING AND EXHIBITION

09.00 WELCOME

Peter Richardson – Chair, Tramlink Nottingham

09.10 HS2 and HS3: Connecting the regional networks

Martha Grekos – Partner, Irwin Mitchell

09.35 Managing capacity on Midlands rail routes

Graham Botham – Strategy and Planning Director (North), Network Rail

10.00 Transport for the North: Urban transit priorities

David Brown – Chief Executive, Transport for the North

10.25 Where next for NET?

Chris Deas – Major Projects Director, Nottingham City Council

10.50 Maximising the economic value of interchanges

Jo Baker – Development Director, Urbanisation, Mott MacDonald

11.15 Questions and answers with session 1 speakers

11.30: MID-MORNING REFRESHMENTS, NETWORKING AND EXHIBITION

12.00 Crystal-ball gazing into the future of public transport **PANEL DEBATE**

David Brown – Chief Executive, Transport for the North

Jo Baker – Development Director, Urbanisation, Mott MacDonald

Michael Jacobs – Research Fellow, IPPR North

Hiro Aso – Head of Transport and Infrastructure, Gensler

David Sidebottom – Passenger Team Director, Transport Focus

13.00: LUNCH, NETWORKING AND EXHIBITION

14.00 Moving people: Digital wayfinding in a 21st Century city

Hiro Aso – Head of Transport and Infrastructure, Gensler

14.25 Trends in passenger information services

Paul Everson – Industry Specialist, Trapeze Group

14.45 The Robin Hood Card: Transforming travel

Andy Gibbons – Public Transport Manager, Nottingham City Council

Nic Greaves – Associate, ITP

David Wheeler – Associate, SYSTRA

15.20 Ticketing futures

Ian Robinson – Projects Director, SYSTRA

15.45 Environmental challenges for urban transport

Michael Jacobs – Visiting Fellow, IPPR

16.10 Workplace mobility plans and their effect on CO₂ profiles

Dan Blanchet – Commercial Manger, iBase Systems

16.35 Questions and answers with session 3 speakers

17.00: CLOSING REMARKS FROM CHAIR

17.15: CLOSE OF INTERMODAL

VENUE INFORMATION

Nottingham Conference Centre

Burton Street
Nottingham
NG1 4BU

Nottingham Conference Centre is around 1km from Nottingham railway station. If travelling by tram, NET has five park-and-ride sites and a tram stop on Station Street next to the railway station, with one next to the Conference Centre - Royal Centre.

East Midlands Airport can be reached by bus, taxi or hire car in around 30 minutes.

ACCOMMODATION

Crowne Plaza

Tel: +44 (0) 871 942 9161
Website: www.crowneplaza.com/cpnottingham

Hilton - Nottingham City Centre

Tel: +44 (0) 115 934 9700
Website: www.hilton.co.uk/nottingham

Ramada Nottingham - City Centre

Tel: +44 (0) 115 912 8000
Website: www.ramadanottinghamcitycentre.co.uk

Park Plaza - Nottingham City Centre

Tel: +44 (0) 115 947 7200
Website: www.parkplaza.com/nottingham

Britannia Nottingham

Tel: +44 (0) 871 222 0098
Website: www.britanniahotels.com/hotels/the-britannia-nottingham-hotel

Holiday Inn - Nottingham City Centre

Tel: +44 (0) 115 941 9931
Website: www.holidayinn.co.uk

PARKING

Car parking is available on Talbot Street - Nottingham Conference Centre has a reduced rate of £7.50 per car per day, or overnight parking for £9.50 per car per night.

This discounted rate is available to Intermodal attendees - please pay for your permit at the main Nottingham Conference Centre reception, which you can then exchange at the car park office to receive your token.

WI-FI

There is free Wi-Fi in the venue. Simply log on to either 'NottinghamConferenceCentre' or 'Ntuguest' and accept the terms and conditions to use the network.