



# A Catalyst for Urban Regeneration

The Midland Metro Alliance

July 2024



Transport for  
West Midlands



# A Catalyst for Urban Regeneration



**Amanda White**  
TFWM Interim Metro Director  
Funding Constraints &  
value for money challenge



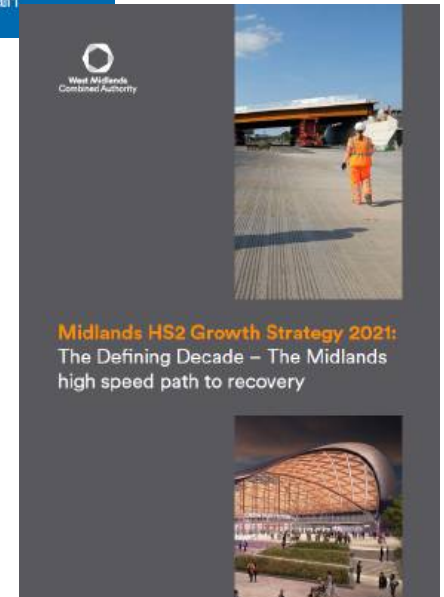
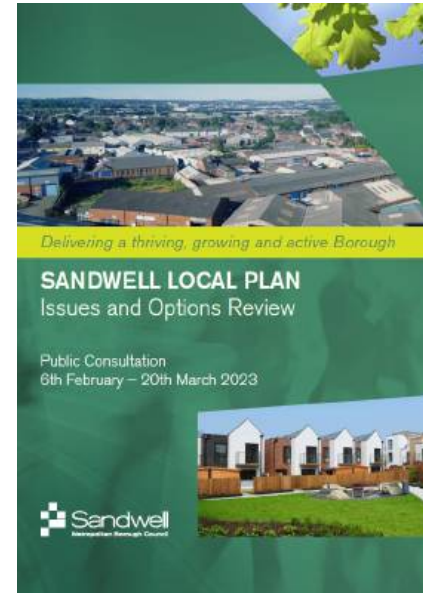
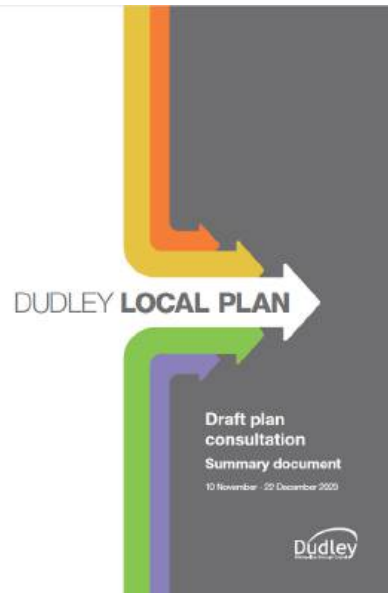
**Iain Anderson**  
Colas Rail Managing Director  
Urban & Industries  
The MMA Journey



**Damien Gent**  
EGIS UK Business  
Development Director  
The real cost of LRT



# A Reminder of Why



**Confused about the News?**

# Transport schemes may hit the buffers - report

## Furious Dudley leader issues scathing attack after Metro extension to town is delayed

The furious leader of Dudley Council has launched a scathing attack on

WEDNESDAY 17 JULY 2024 5:30 AM

# Booming Birmingham is a model for growth

## 11m cost

### MIKE FOR TRANSPORT SCHEMES

16 JUL 2024 | BY CHARLOTTE BANKS

## Angela Rayner Promises to Give Local Areas More Power

Ms. Rayner, who is secretary of state for housing, communities, and local government, says she wants council leaders to 'partner with this government.'

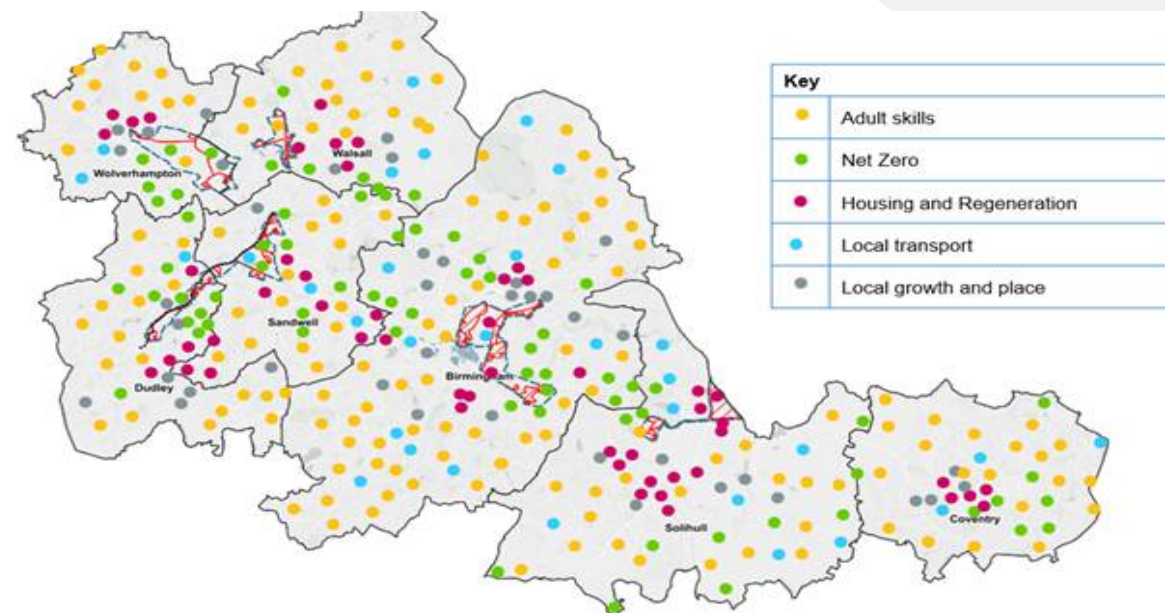
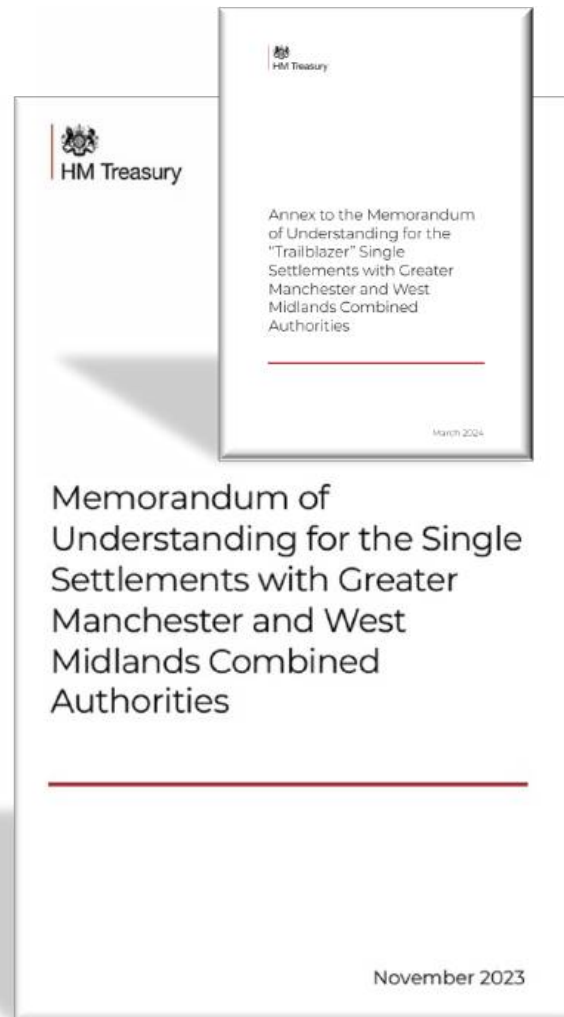
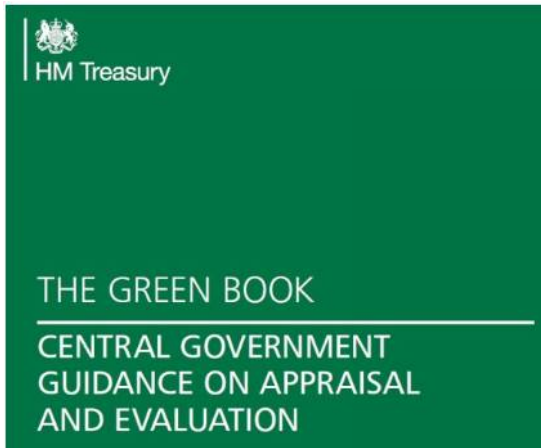


Transport for West Midlands





# A Fair Assessment?



# Integrated Transport



# Midland Metro Alliance



## Schemes

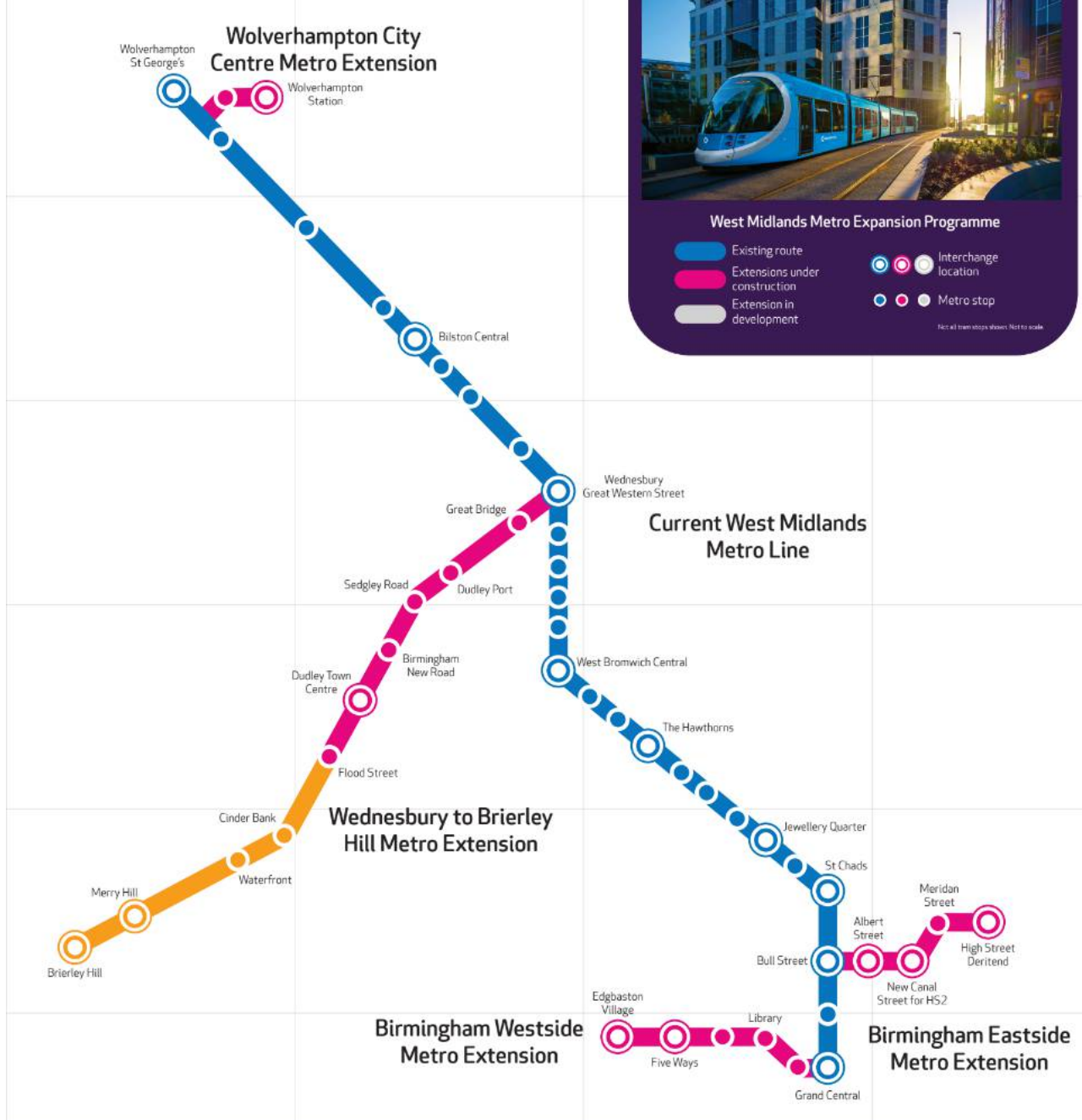
- Centenary Square
- Edgbaston
- Birmingham East Side
- Wolverhampton
- Wednesbury to Brierley Hill

## Others

- Depot upgrades
- Line 1 Power Upgrade
- Various OLE & Track renewals
- Buy before you Board Ticketing



Transport for West Midlands





# The Journey - Centenary Square Extension



0.7 km



Q4 2019





# The Journey - Edgbaston



1.3 km



Q3 2022



Transport for West Midlands





# The Journey - Birmingham East Side



1.8 km



Not Open Yet



Transport for West Midlands





# The Journey - Wolverhampton



0.8 km



Q3 2023



Transport for  
West Midlands





# The Journey - Wednesbury to Dudley



7.4 km



Under Construction

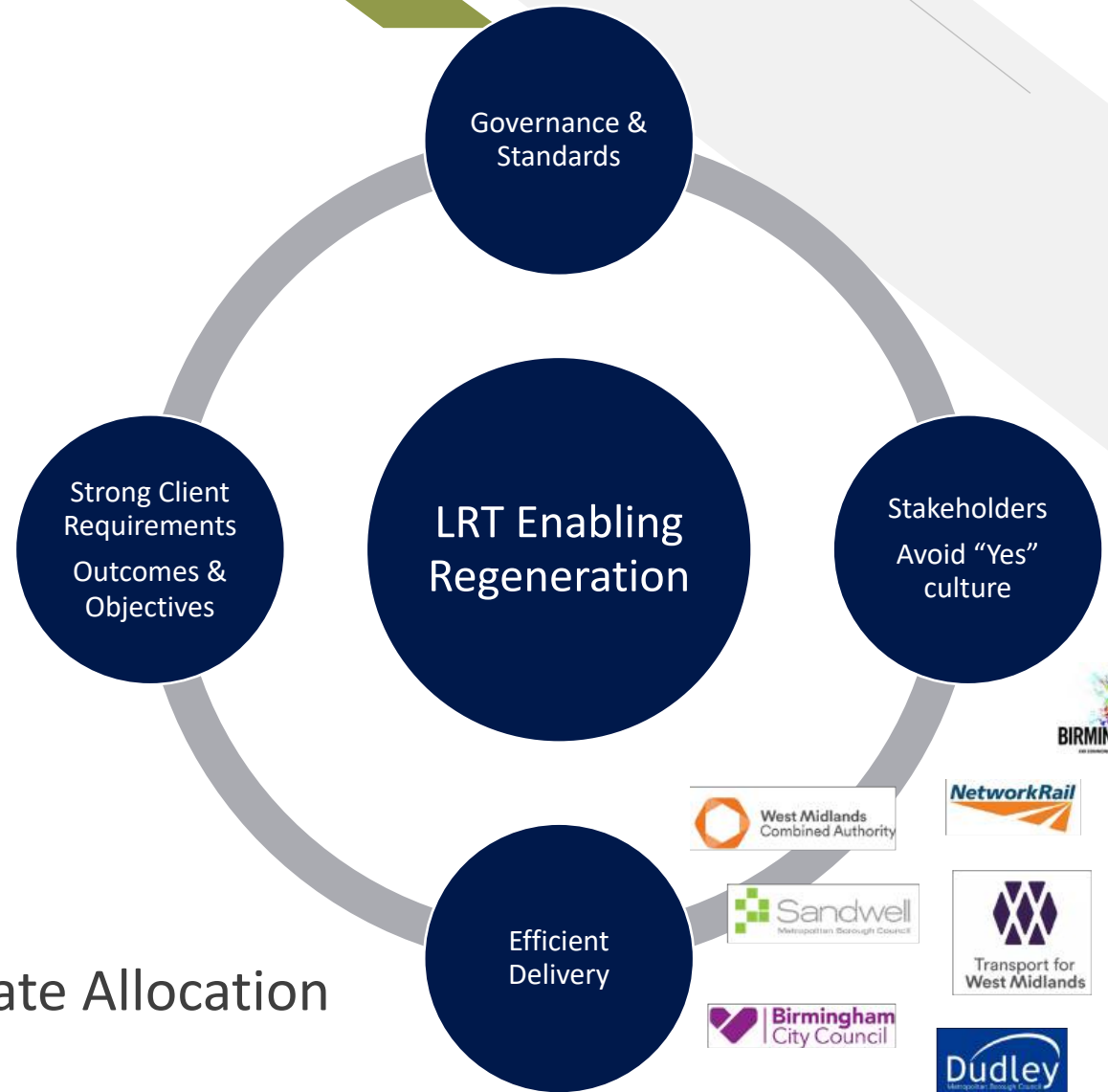
[Midland Metro Alliance | Why Metro Matters Video](#)



Transport for West Midlands



# Lessons Learnt



## Unlocking Cost Insights:

Drilling into Scheme Expenses for Accurate Allocation



Transport for West Midlands





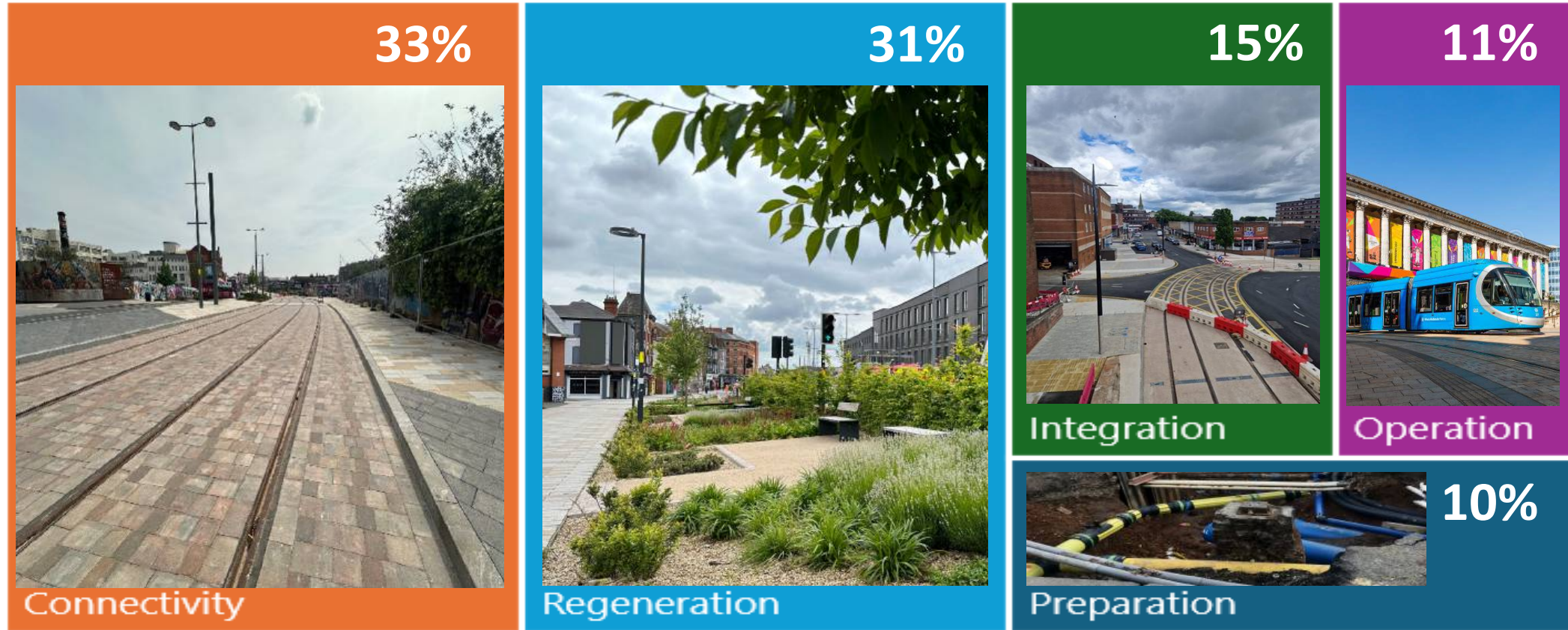
# Cost Capture Insight

1. Preparation
2. Connectivity
3. Integration
4. Regeneration
5. Operation



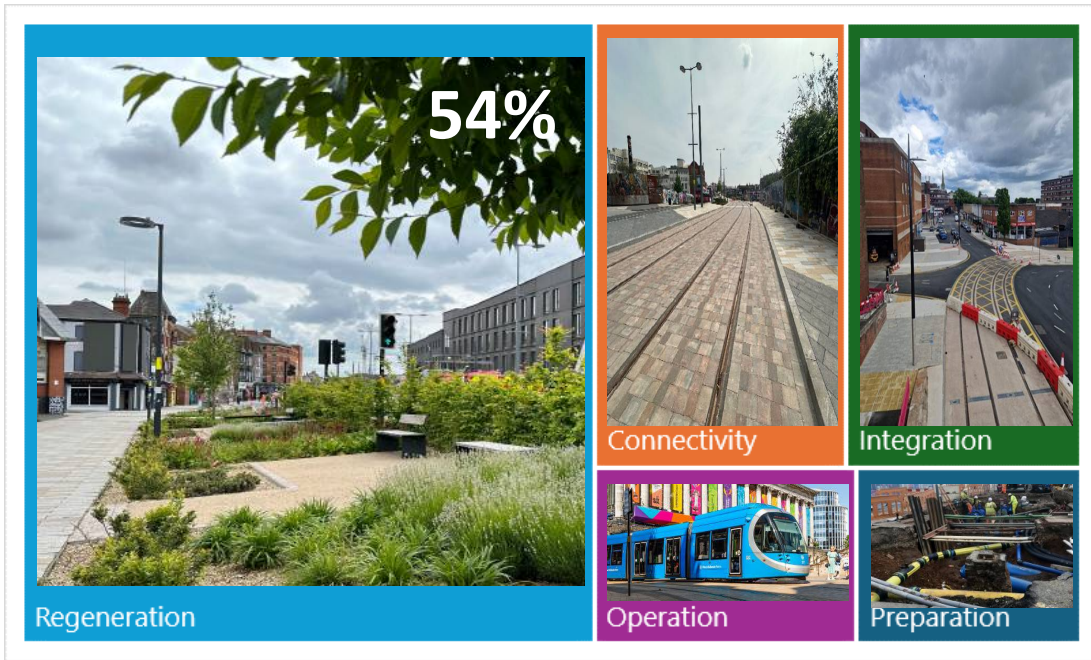


# LRT Costs



# LRT Costs

## Inner City / Urban

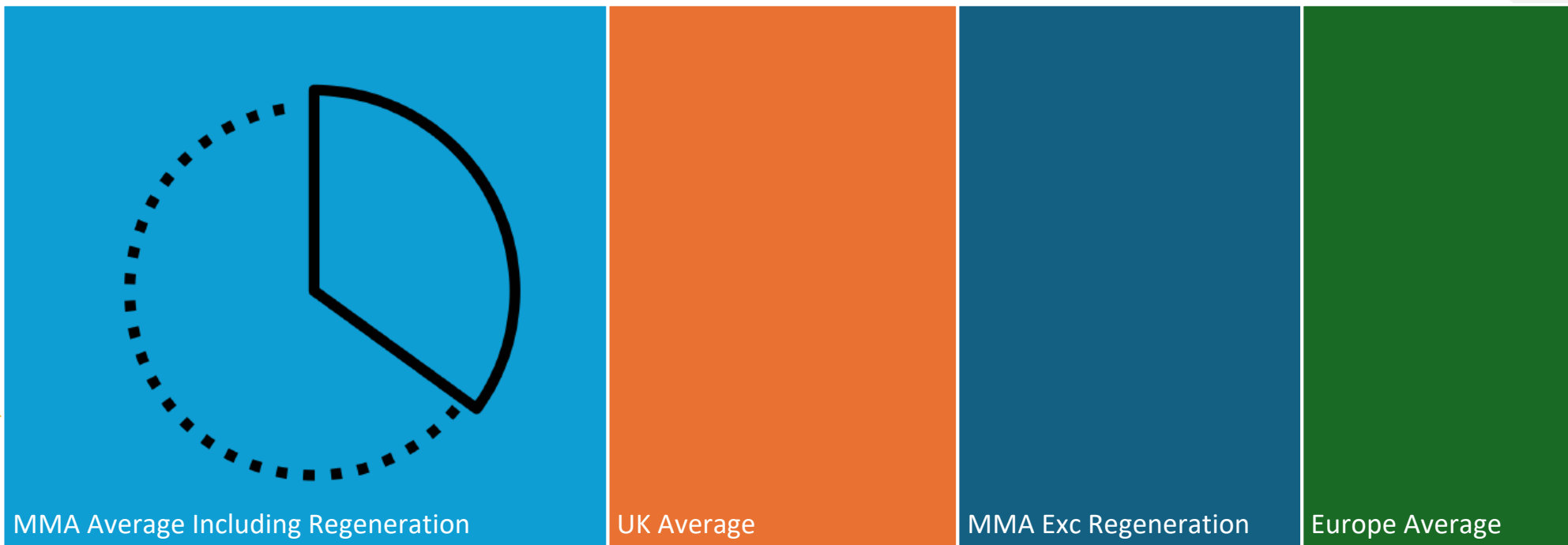


## Inter-Urban





# Cost Per KM Comparison



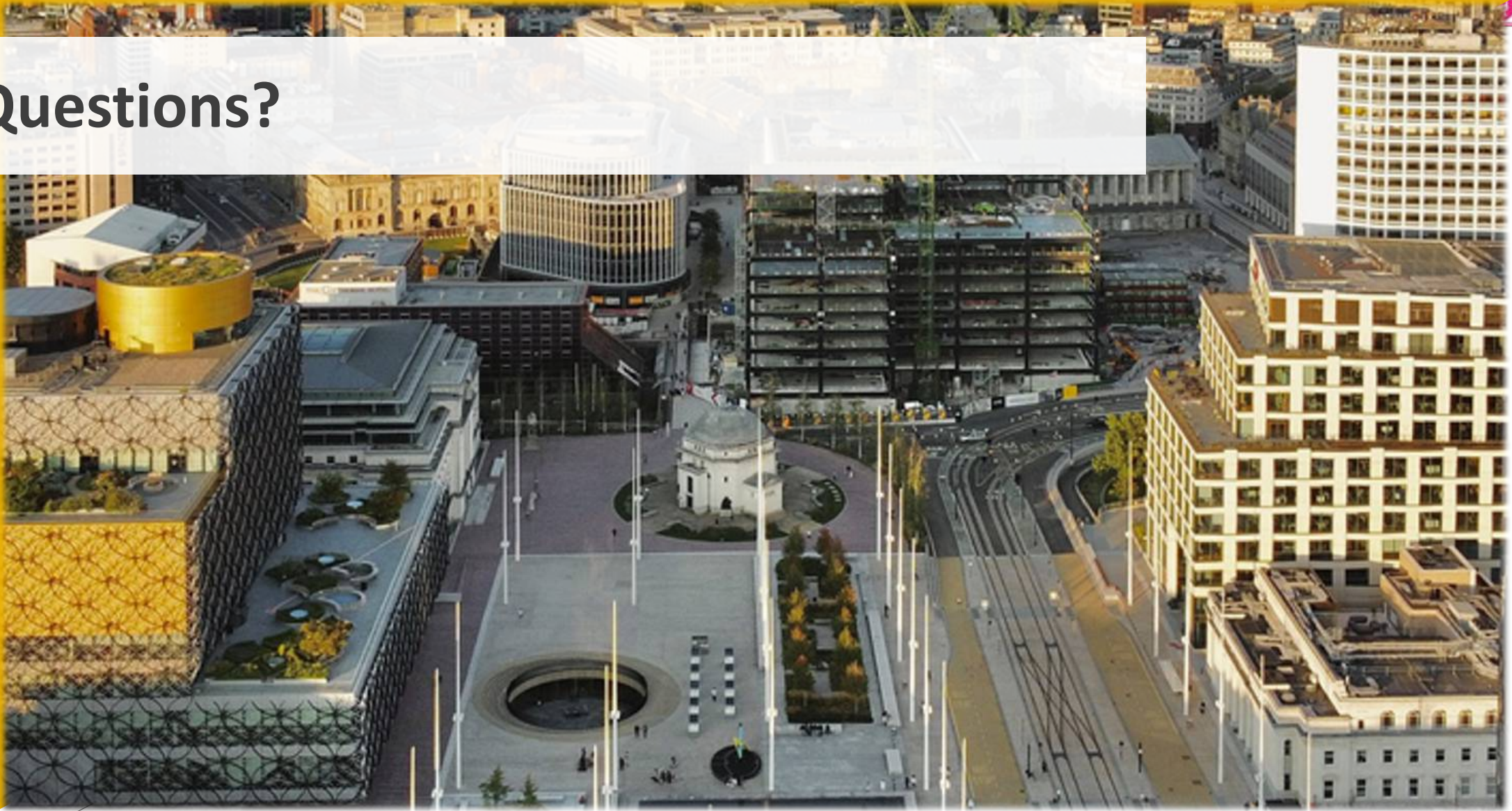


# To Conclude

- The purpose of investing in LRT must be clear: the outcomes, aims and goals as this influences everything from the business case to the public perception.
- The industry has a huge amount of knowledge, skill and experience in delivering safe and efficient LRT across cities – we need to retain this.
- The industry needs a more consistent, forensic way of capturing, allocating and representing the costs associated with regeneration schemes enabled by LRT.
- Currently circa 1/3 of the total cost is delivering regeneration - to unlock future schemes we need to consider the funding streams for the value for inner city projects.
- As an industry, we need to cohesively present our case – not by city or by project, but by the overall benefits that LRT brings – a catalyst for Regeneration



# Questions?



Transport for  
West Midlands

